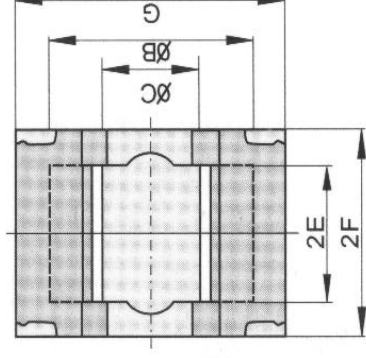
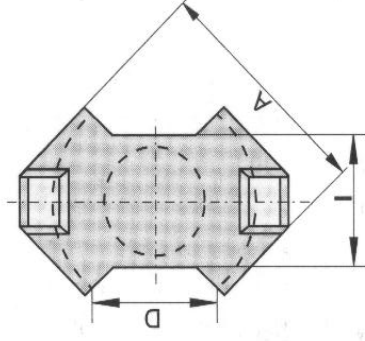


MnZn Ferrite RM Cores



Part no.	Dimensions (mm)										C1 (mm ⁻¹)	Le (mm)	Ae (mm ²)	Ve (mm ³)	Weight (g)	AL (nH/N ²) ±25%
	A	B	C	D	2E	2F	I	G								
RM4	9.6 ±0.2	8.15 ±0.15	3.8 ±0.1	5.8 min	7.2 ±0.2	10.4 ±0.1	4.5 ±0.12	10.8 ±0.2	1.70		22.00	13.00	286.00	1.65	2300µi	1070
RM5	12.05 ±0.25	10.4 ±0.2	4.8 ±0.1	6.0 min	6.5 ±0.2	10.4 ±0.1	6.6 ±0.2	14.3 ±0.3	0.93		22.10	23.80	525.98	3.00	2000	2000
RM6	14.4 ±0.3	12.65 ±0.25	6.3 ±0.1	8.4 min	8.2 ±0.2	12.4 ±0.1	8.0 ±0.2	17.6 ±0.3	0.78		28.60	36.60	1046.76	5.30	2400	2400
RM7	16.85 ±0.35	15.05 ±0.3	7.1 ±0.15	9.3 min	8.6 ±0.2	13.4 ±0.1	7.1 ±0.15	19.9 ±0.4	0.70		30.40	43.00	1307.20	7.20	2700	2700
RM8	19.35 ±0.35	17.3 ±0.3	8.4 ±0.15	9.8 min	11 ±0.2	16.4 ±0.1	10.8 ±0.2	22.75 ±0.45	0.59		38.00	64.00	2432.00	13.00	3000	3000
RM10	24.15 ±0.55	21.65 ±0.45	10.7 ±0.2	11.3 min	12.7 ±0.3	18.6 ±0.2	13.25 ±0.25	27.85 ±0.65	0.45		44.00	98.00	4312.00	23.00	4500	4500
RM12	29.2 ±0.6	25.45 ±0.55	12.1 ±0.7	13.4 min	17.1 ±0.3	24.5 ±0.1	15.85 ±0.25	36.85 ±0.75	0.39		57.00	146.00	8322.00	45.00	5400	5400
RM14	34.2 ±0.5	29.5 ±0.5	14.75 ±0.25	17.0 min	21.2 ±0.3	28.8 ±0.2	18.7 ±0.3	41.6 ±0.6	0.37		69.00	188.00	12972.00	70.00	6000	6000