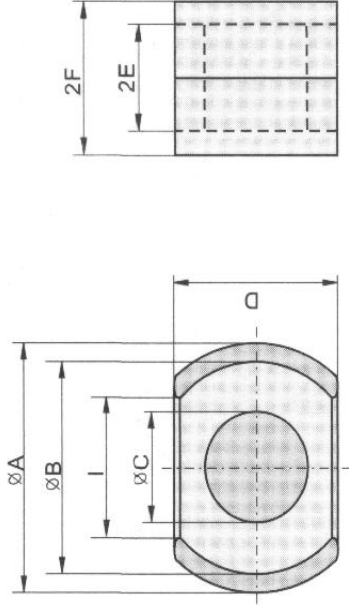


MnZn Ferrite Cut Cores



Part no.	Dimensions (mm)										C1 (mm^{-1})	Le (mm)	Ae (mm^2)	Ve (mm^3)	Weight (g)	AL (nH/N ²) $\pm 25\%$
	A	B	C	D	2E	2F	I									
CUT25	25.3 ± 0.71	22.41 ± 0.37	8.815 ± 0.225	15.20 ± 0.3	7.52 ± 0.46	11.08 ± 0.36	16.6 min								11.20	2300 μ i
CUT30	30.0 ± 0.5	25.4 ± 0.4	13.3 ± 0.2	20.3 ± 0.25	13.2 ± 0.2	18.8 ± 0.2	18.2 min				0.41	49.50	120.00	5940.00	31.00	4000
CUT33	33.2 ± 0.5	26.8 ± 0.4	13.4 ± 0.2	23.7 ± 0.3	8.4 ± 0.3	13.8 ± 0.3									29.60	5500
CUT33A	33.2 ± 0.5	26.8 ± 0.4	13.4 ± 0.2	23.7 ± 0.3	13.0 ± 0.3	18.6 ± 0.3					0.35	51.40	147.40	7576.00	38.00	5200
CUT40	39.8 ± 0.5	33.2 ± 0.5	16.0 ± 0.25	28.03 ± 0.35	9.9 ± 0.2	13.5 ± 0.2					0.35	71.30	205.00	14616.50		6500